

Specialty Supply & Installation LLC

The Seating Pros

Fall 2011
Gym Bleacher Parts Catalog



Seating Solutions:
Gym Bleacher Parts
Maintenance/Service/Repairs
Rol-Eze Mover Systems

Phone: (936) 890-8997 Fax: (936) 890-6845
Email: ssic@theseatingpros.com

Telescopic Seating Solutions:

Specialty Supply & Installation

Specialty Supply is a family owned and operated business with over 30 years of gym bleacher building and repair experience. No matter what your bleacher type or size you can depend on Specialty Supply's factory trained repair technicians to help assist you.

Parts

We carry a wide selection of the most common bleacher parts. Included in this catalog are list of the most commonly requested parts. If the part you are looking for is not shown please call or send an email. For parts not shown or identified we ask to better serve you, the customer, to please send us an email with photo and brief description in order to help us better facilitate your needs.

Service

Our service and/or maintenance service could be just the solution you need. Our repair technicians are factory trained and certified, plus we have years of experience performing repair services on all bleacher types. Additionally, our 22-point maintenance and inspection service will keep your bleachers at optimal performance. With this inspection we provide you with a written checklist and point out any areas of concern or in need of repair.

Rol-Eze Power

The Rol-Eze Power System is a dependable easy to operate power solution for new and old bleachers systems. The Rol-Eze System is our patented non-friction mover system that provides smooth hassle free service, no matter what size or type of bleacher you may have, for years to come.

Parts

3 Amp Circuit Breaker

P/N: 1005106 \$30.59

Fits most Hussey 2600 Gym Bleachers,
Located at pendant box.



7 Amp Circuit Breaker

P/N: 1004292 \$30.59

Fits most Hussey 2600 Gym Bleachers,
Located at junction box under front row



20 Amp Circuit Breaker

P/N: 1004322 \$30.59

Fits most Hussey 2600 Gym Bleachers,
Located at junction box under front row



120 V (Ice Cube) Relay

P/N: 1005762 \$69.18

Fits most Hussey 2600 Gym Bleachers,
Located inside junction box on front of
Power Trac III & Power Trav IV Motors

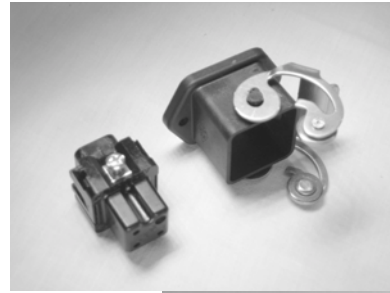


Maxam Female Socket Kit

P/N: SSIC-1 \$62.12
Located on pendant control box

Kit Includes:

- 1-Female Socket P/N: 2015730 \$20.12
- 1-Socket Housing P/N: 2105732 \$25.29
- 1-Receptacle Clasp P/N: 2093869 \$16.71



Maxam Pendant Plug Kit

P/N: SSIC-2 \$29.18
Located on pendant control

Kit Includes:

- 1-Male Socket Plug P/N: 2015716 \$20.94
- 1-Male Socket Hood P/N: 2015720 \$8.24



RO Female Pendant Socket

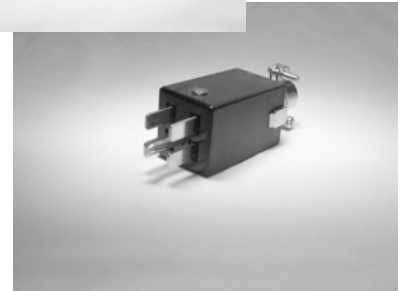
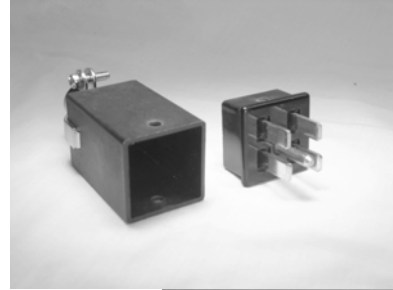
P/N: 1031470 \$15.06
Located on pendant control box



RO Male Pendant Plug

P/N: 1040013 \$20.94

Located on pendant control



RO Pendant Box

P/N: SSIC-3 \$300.69

Located on the front row of bleacher

Kit Includes:

1-Cover P/N: 2020853 \$211.76

1-Pigtail P/N: 1038718 \$70.59

1-Box P/N: 1023311 \$11.76

1-Override Switch P/N: 1041788 \$6.58



RO26 Pendant Control

P/N: 1022382 \$410.95



Maxam Pendant Control

P/N: 2015706 \$411.76



**1/2 HP Motor for
Power III & Power Trac IV
(Single Phase) & Jumper**

P/N: 1033934 \$774.12



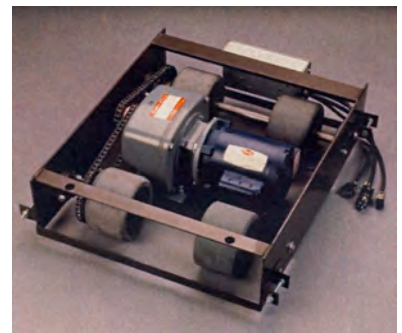
**Power Trac III Motor Kit
W/60:1 Gearbox**

P/N: 1042845 \$2,870.59



**Power Trac IV Motor Kit
W/87:1 Gearbox**

P/N: 1023562 \$6,482.35



Grey Power Trac III & Power Trac IV Wheel

P/N: 1036428

1-23 Wheels \$116.47 each

24-Up Wheels \$104.71 each



Friction Drive Wheel

P/N: FBC 6X9 \$687.50

Folding Bleacher Company

6"X9-1/2" wheel size, 3/4"X15" shaft

Size. Fits most Folding Bleacher and Interkal Bleacher friction movers.



Drive Wheel Sprocket

P/N: Call for application \$75.00 and up

Size varies. Please specify shaft size,

Number of teeth and overall dimensions.



60:1 Gearbox Reducer

P/N: 2023556 \$625.88



70:1 Gearbox Reducer

P/N: 2105401 \$1,218.82



87:1 Gearbox Reducer

P/N: 1014020 \$2,762.35



Wheel Push Ring 7/8" Shaft

P/N: 1033936 \$0.82

Located on reducer wheel shaft.

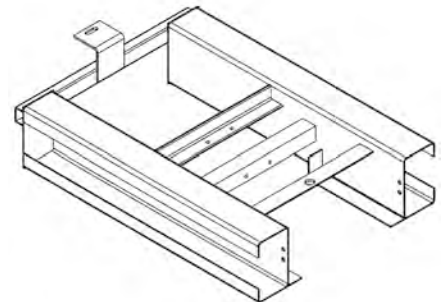
Holds wheel on shaft



Power Trac III Weight Bracket

P/N: 1016601 \$425.76

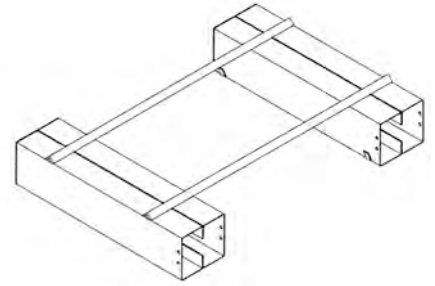
Located under first row on top of motor



Power Trac IV Weight Bracket

P/N: 1027753 \$457.65

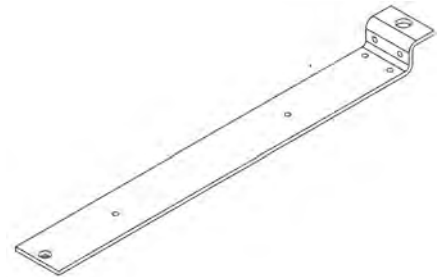
Located under first row on tip of motor



Power Trac III & Power Trac IV Motor Mount

P/N: 1037629 \$127.77

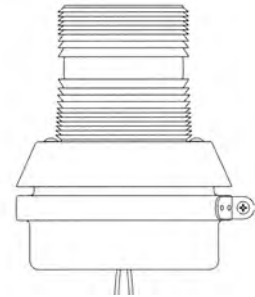
Located under first row above motor



Motion Monitor

P/N: 1000252 \$704.24

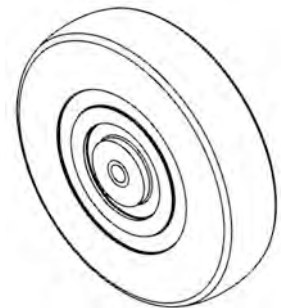
Located behind or around bleachers



4" Soft Frame Wheel

P/N: 1001132 \$4.71

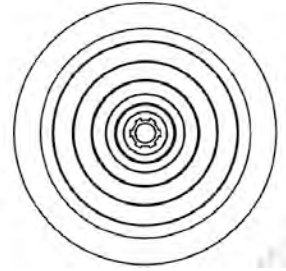
Located inside the bottom of frame channel



MXM 5" Soft Frame Wheel

P/N: 2011007 \$8.35

Located inside bottom of frame channel

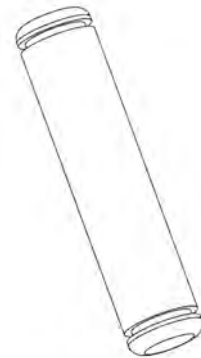


4" Wheel Axle

P/N: 1001133 \$3.06

5" Wheel Axle

P/N: 2011157 \$0.94



Snap Ring (E-Clip)

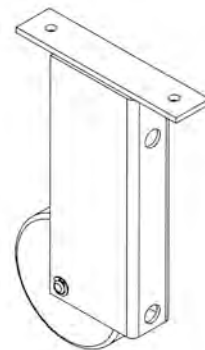
P/N: 1001119 \$0.12



Outrigger

P/N: 1002254 \$51.29

Located under front row

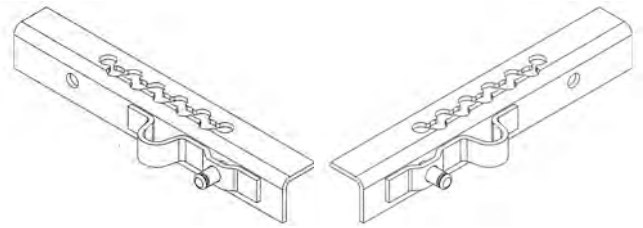


Auto Stop Bar (RH-LH)

P/N: 1002075 (RH) \$20.24

P/N: 1002076 (LH) \$20.24

Located at the rear of bottom channel
Side is determined by facing the bleacher
In the center of each individual section

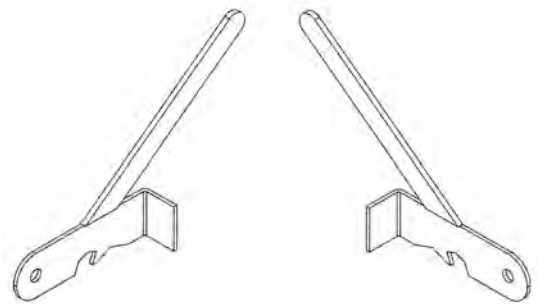


RO Tier Catch (RH-LH)

P/N: 1002077 (RH) \$9.88

P/N: 1002078 (LH) \$9.88

Located on bottom channel in front of upright

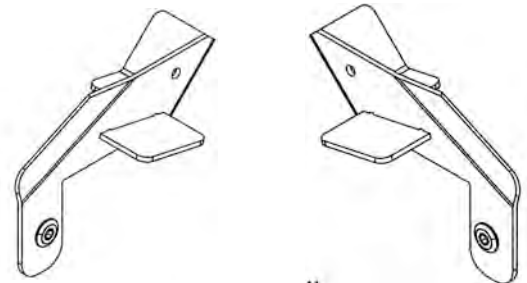


MXM Tier Catch (RH-LH)

P/N: 2011241 (RH) \$10.40

P/N: 2011242 (LH) \$10.40

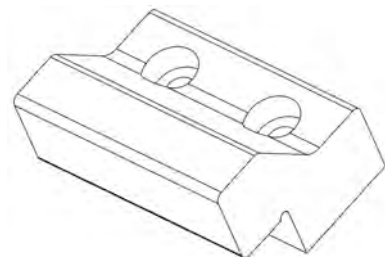
Located on bottom channel in front of upright



Top Right Guide

P/N: 1027855 \$20.12

Located on the tip of the frame

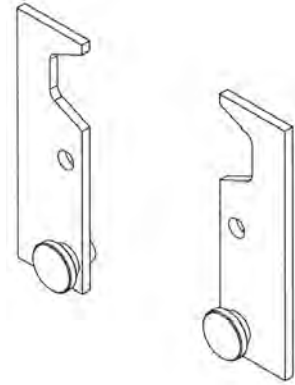


Maxam Power Frame Puller (RH-LH)

P/N: 2017958 (RH) \$8.47

P/N: 2017955 (LH) \$8.47

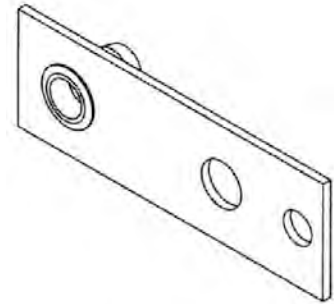
Located on second tier power frames



Maxam Flex Row Rear Catch

P/N: 2060511 \$6.59

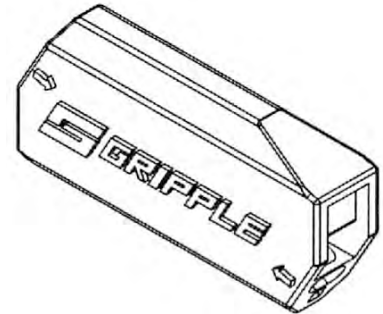
Located at rear of guide channel
under second row



Gripple

P/N: 2097881 \$4.83

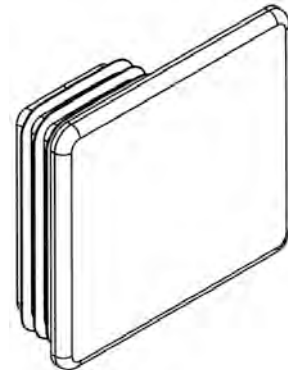
Located under first row on flex row release cable



Maxam Nose Cone End Cap

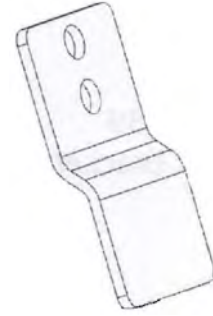
P/N: 2012445 \$1.06

Located on the front ends of the nose cone



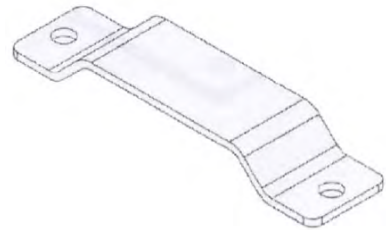
**Maxam Front Row Aisle
Step Retainer**

P/N: 2029722 \$1.00
Located behind the front row step



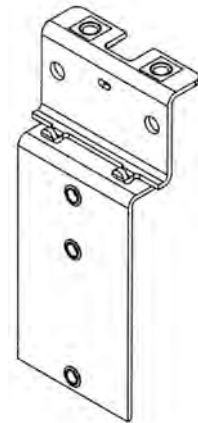
**Maxam Front Row Aisle
Step Clip**

P/N: 2029716 \$2.00
Located on the skirt board panel
Behind front row step



Maxam Skirt Panel Support

P/N: 2074102 \$34.90
Located behind skirt board panel
Under first row



Maxam Skirt Panel Hinge

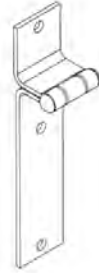
P/N: 2033006 \$15.29
Located behind skirt panel under first row



RO Skirt Panel Hinge

P/N: 1001061 \$15.41

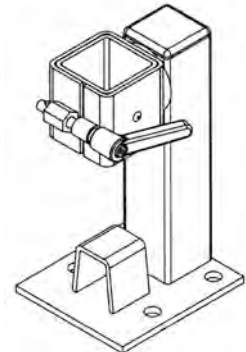
Located behind skirt board panel under first row



Fold Down Aisle Rail Socket 9 5/8" Rise

P/N: 2067053

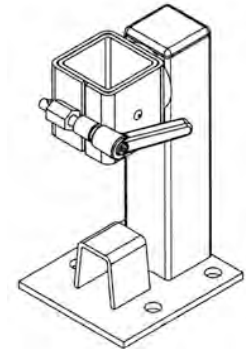
\$168.70



Fold down Aisle Rail Socket 11 5/8" Rise

P/N: 2067054

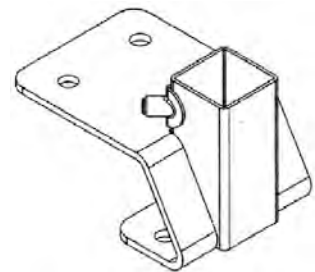
\$218.71



Maxam Front Rail Socket (90°)

P/N: 2016981 \$56.50

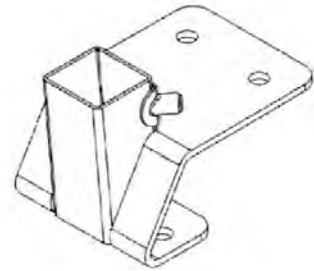
Located on second row at ADA locations



Maxam Aisle Rail Socket (5°)

P/N: 2010908 \$39.88

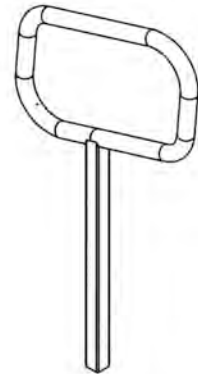
Located in aisle location



**Maxam Aisle Rail
("Q" Style Rail)**

P/N: 2010919 \$184.47

Square tubing base with round tubing top



**Maxam Aisle Rail
(1 pc. "P" Style Rail)**

P/N: 2101244 \$85.00

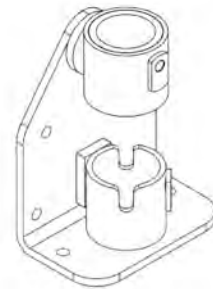
All square tubing



RO Aisle Rail Socket

P/N: 1012002 \$224.59

All round tubing with hole in bottom
For retaining pin



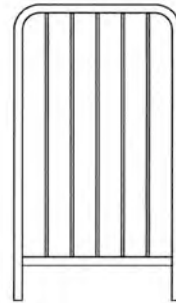
**RO Aisle Rail
("Q" Style Rail)**

P/N: 2102273 \$446.35



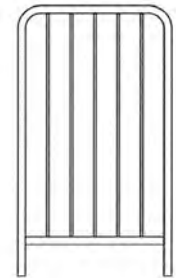
Maxam End Rail (Full Deck)

P/N: 2011056 \$166.24



**Maxam Top Row End Rail
(Partial deck)**

P/N: 2011051 \$162.35



3" Rubber Pad

P/N: 1041152 \$9.18

Located under front row steps and
Under portable bleacher feet



Maxam 10" Courtside Seat Module

P/N: 2099855 (intermediate) \$50.00

P/N: 2099856 (Starter) \$50.00



Maxam 12" Courtside Seat Module

P/N: 2099857 (intermediate) \$60.00

P/N: 2099858 (starter) \$60.00

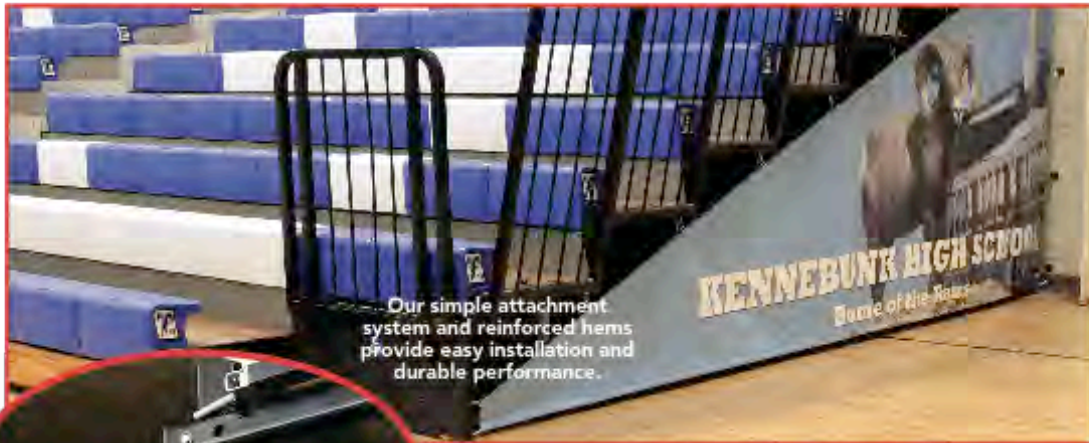


Maxam Courtside End Logo

Call for application and pricing



SAFETY has never looked better.



Our simple attachment system and reinforced hems provide easy installation and durable performance.

Ring down the curtain on injury, vandalism and potential liability risk. With Hussey Safety End-Closure Curtains, you can boost gym safety while displaying your school pride. Built school-tough, they work beautifully and securely on new or existing bleachers. And Hussey offers the capability for full-bleed designs—including photographs.

A lot of smart thought is behind each Hussey curtain:

- blocking unauthorized access to your bleacher understructure to prevent injury and vandalism,
- carrying your school's identity with your choice of colors, logos and full-bleed designs,
- providing "billboard" space that can be sold to sponsors,
- attaching to the bleacher permanently so there's no need for storage space,
- and providing long-term wear with chemically bonded images and water- and UV-resistant materials.

SHOW YOUR TRUE COLORS:
attention to safety and school pride.

Call your local Hussey Seating Company Dealer today to order your Hussey Safety End-Closure Curtains.



husseyseating[™]

YOUR PARTNER FOR SEATING SOLUTIONS

www.husseyseating.com

Specialty supply & Installation LLC
Phone: (936) 890-8997 Fax: (936) 890-6845
Email: ssic@theseatingpros.com

Bleacher Inspection Report

Please check appropriate space/s. Please complete report for each school and each gym.

- The telescopic seating system meets operating standards.
- The telescopic seating system meets operating standards, but requires the following repairs and/or adjustments.
- The telescopic seating system DOES NOT meet operating standards and SHOULD NOT BE USED until the following repairs and/or adjustments are made.
- The telescopic seating system DOES NOT meet current ADA and/or Building Code. It is our recommendation that the seating system be brought up to the current code standards. This typically includes end rails with openings not greater than 4", designated aisles with step height not greater than 6", aisle hand rails, no open space greater than 4", sufficient number of ADA spaces (wheelchair locations). Please note, the final responsibility for code compliance is the responsibility of the owner. Official interpretation rests solely with the local authorities having jurisdiction. Neither Specialty Supply & Installation LLC, it's employees or it's suppliers can assume responsibility or liability for code compliance.

Facility Info:

Facility Name: _____

Contact: _____ Title: _____

Address: _____ Phone: _____

City: _____ Fax: _____

State/Zip: _____ Date: _____

The Seating Pros™
P.O. Box 1047 • Conroe, TX 77305 • (936) 890-8997 • Fax (936) 890-6845
www.theseatingpros.com

MAINTENANCE SCOPE OF WORK

THIS PROGRAM COMPLIES WITH THE RECOMMENDATIONS OF THE SEATING MANUFACTURER AND THE NATIONAL SCHOOL SUPPLY & EQUIPMENT ASSOC. (NSSEA) & THE NATIONAL FIRE PROTECTION ASSOCIATION (NFPA 102).

<p>Manually Operated Bleachers</p> <ul style="list-style-type: none"> Inspect welds for cracks or breaks Inspect for misalignment & excessive wear Tighten all loose nuts and bolts Replace any missing nuts and bolts Inspect for proper rear row anchoring Inspect wall attachment anchoring Inspect for bent or damaged row locks Inspect upper and lower row interlocks Inspect for lower track obstructions Grease upper and lower track assemblies 	<p>Power Operated Bleachers</p> <ul style="list-style-type: none"> Inspect all bearings for excessive wear Inspect all chains for excessive wear Inspect for "bleacher walking" Inspect for damaged limit switches Inspect for damaged loose wiring harness <p>ADA & Code Items</p> <ul style="list-style-type: none"> Check for ADA spaces Check for End Rails Check Rail opening dimensions Check Gap dimension between boards Check for Aisle hand rails Check for intermediate steps Check step height
---	--

If we find any problems during our maintenance that are not covered by our warranty, our experienced technicians can make suggestions to the type of repairs that should be done.

Specialty Supply & Installation LLC has provided Bleacher Repair & Service since 1972 and the manufacture of the Rol-Eze Power Drives since 1979. We value our reputation in the bleachers repair market and offer complete service unmatched by anyone else. We are the only Texas based, factory-authorized technicians for Hussey Seating Co. and the only sales and service company providing service or repair for ALL brands of gymnasium seating.

The Seating Pros™
P.O. Box 1047 • Conroe, TX 77305 • (936) 890-8997 • Fax (936) 890-6845
www.theseatingpros.com

Service

Our service and/or maintenance service could be just the solution you need. Our repair technicians are factory trained and certified, plus we have years of experience performing repair services on all bleacher types. Additionally, our 22-point maintenance and inspection service will help keep you bleachers at optimal performance. We will provide a written checklist and point out any areas of concern or needed repairs.

Specialty Supply & Installation LLC
Phone: (936) 890-8997 Fax: (936) 890-6845
Email: ssic@theseatingpros.com